

## **Duddon Saint Peter's CE School**



### **Pay Policy**



#### **MODEL WHOLE SCHOOL PAY POLICY EFFECTIVE FROM 1 SEPTEMBER 2023**

#### **Introduction:**

The governing body aims to maximise the achievement of every pupil at the school and recognises the value of a well-motivated and capable body of teaching and support staff in the achievement of this.

The governing body is required to establish a whole school pay policy, monitor the implementation and outcome(s) of the arrangements and review the policy and its operation every year in consultation with the trade unions. This pay policy seeks to ensure that all staff are properly rewarded for their contribution towards this shared goal. This policy has been developed to comply with current legislation and the requirements of the School Teachers' Pay and Conditions Document.

In adopting the Pay Policy the aim is to:

- Maximise the quality of teaching and learning at the school, by ensuring that implementation of the policy takes full account of the school's plans for improvement and development.
- Have proper regard for the work/life balance of staff at the school.
- Recruit, retain, motivate and develop staff.
- Be able to demonstrate that the policy and decisions on pay are managed in a fair, just and equitable way, recognising the principle of equal pay for like work and work of equal value.
- Determine the annual pay budget, including that for pay progression, compatible with the school's overall budget position.
- Be consistent with the school's appraisal policies.
- That the impact of the exercise of pay discretions does not contravene the Equality Act 2010.

This policy was adopted by the governing body of Duddon St. Peter's School on 7 September 2023.

The governing body has established a Pay Panel with fully delegated authority to make pay decisions based on the recommendations of the Headteacher. The terms of reference of the pay committee and the members of the committee are attached (Appendix A).

## **Basic Principles:**

The current staffing structure of the school is attached (Appendix B). All support staff and relevant teaching posts within the structure have detailed job descriptions which are periodically reviewed, and which are written with due regard to enabling staff to maintain a reasonable work/life balance.

The governing body has determined the range and grade of each post in accordance with the STPCD or NJC job evaluation scheme, taking into account the duties and responsibilities of each post.

The governing body is committed to the operation of an appraisal process for teachers support staff, with the objective of maximising the professional development of all staff and progress of pupils. The governing body will ensure that all staff in school have access to advice, training and development opportunities appropriate to their needs.

## **Equality Act 2010**

The Governing Body will give due regard to equality considerations in adopting this policy and is satisfied that its application will not impact adversely on members of staff who have a protected characteristic as defined by the Equality Act 2010.

## **Pay Appeals Procedure:**

A member of staff may seek a review of any determination in relation to their pay or any other decision taken by the governing body (or committee or individual acting with delegated authority) that affects their pay.

The procedures to be followed for Teaching and Support staff are set out later in this document.

## **Support Staff:**

The governing body recognises and values the contribution made to the school by its support staff.

## **Conditions of Service**

The pay and conditions for support staff are determined through the National Joint Council (NJC) for Local Government Services as adopted by Cheshire West and Chester Borough Council and the School. This group of staff includes all staff at the school that are not subject to Teachers' pay and conditions.

## **Pay Spine**

The Governing Body has adopted the CW&C Council pay spine for support staff. A copy is available from the school office.

## **[CW&C Living Wage**

The Governing Body has adopted the CW&C Living Wage, and this will mean that all staff will receive a minimum of £10.90 per hour. This rate will be reviewed annually.]

## **Job Descriptions and Job Evaluation**

The governing body has determined the range and grade of each post in accordance with the NJC job evaluation scheme, taking into account the duties and responsibilities of each post.

## **Salary on Appointment**

It is expected that on appointment an individual will normally be placed at the first point of the relevant grade. Where an individual was employed under the conditions of service of the NJC for Local Government Services immediately prior to appointment at the school, their starting pay should not be less than their previous salary, as far as this may be accommodated within the overall grade of the post. Consideration may also be given to appointment above the first point of the scale in recognition of experience and/or qualifications and where there is a justifiable business case for doing so.

The Head teacher may offer an appointment on less than the full grading range where the employee will not be undertaking, initially, the full duties and responsibilities of the job. If such an arrangement is agreed with the successful applicant, the written notification will specify clearly the reasons why the full range is not being applied and the date when the situation will be reviewed, with a view to the full grading being applied e.g. this is normally linked to where an employee is due to obtain a required qualification.

## **Incremental Progression**

In accordance with the incremental progression procedure adopted by the Governing Body, support staff are eligible to move one point on their pay grade on either 1<sup>st</sup> April each year or the anniversary of their start date until the top of the range for the grade is reached. In all cases, there will be no incremental progression beyond the evaluated grade of the post.

An incremental progression point may be withheld in exceptional circumstances if the staff member is subject to capability procedures. The governing body may choose to award the incremental point at a later date when the staff member's performance has returned to satisfactory.

A member of staff may be paid one or more accelerated increment(s) within the grade for the job at any time, without prejudice to the normal annual increment, at the discretion of the Headteacher.

## **Pay Appeals**

Any member of support staff may seek a review of their grade where they are able to demonstrate a substantial increase in their duties and responsibilities. The staff member should write to the headteacher setting out the grounds for a review. Where a case for review is made, the headteacher will arrange for the job details to be re-evaluated in accordance with the NJC Job Evaluation Scheme as adopted by Cheshire West and Chester Council.

If the member of staff remains dissatisfied, they will have a right of appeal in accordance with the Job Evaluation Procedure. The member of staff will be given the opportunity to make representations as part of this process.

## **Salary on Promotion or Re-grading**

On appointment to a new role, or on re-grading of an existing role to a grade with a higher maximum salary, an employee will be paid a salary on the new grade, which is at least one

increment above the salary that they would have received, in the former grade on the date of grading change. An increase of more than one increment may be justified in the case of a promotion but will be exceptional where the job is re-graded. The level of the starting salary is at the discretion of the Headteacher/Governing Body.

## **Acting Allowance**

Where a member of staff covers the full duties of a higher graded role on a temporary basis, for example to cover a vacancy or in the absence of the substantive post holder (other than to cover for annual leave), for a period of at least 4 weeks, they may be paid an acting allowance equivalent to the grade of the post they are covering. Acting arrangements are time limited and will be subject to regular review.

Where an employee is undertaking partial duties of a higher graded role, a special recognition payment may instead be considered.

## **Recognition Award Scheme**

Recognition awards to individual employees will be given for exceptional performance, normally something additional and something that requires greater skills or carries greater responsibilities. They are not given for doing the job the employee is appointed to do well.

The maximum payment will not exceed 7.5% of basic annual salary and the payment of anything in excess of 5% of basic annual salary will be exceptional.

Awards will be linked to Staff Appraisal and key tasks but there will be justification in some circumstances for recognition outside this process.

## **Retirement Awards**

### ***Community and Controlled Schools***

Employees who retire and access their pension, or if not a member of the pension scheme but would have been eligible to access their pension will receive a Retirement Award of a one-off payment of £20 per year of service. There are no minimum or maximum service criteria. The sum will be paid upon retirement.

### ***Aided and Foundation Schools***

Employees who retire with 20 years' service with the School / Council (which need not be continuous) will receive a lump sum payment of £946 in their last year of service (pro rata for part-time employees). The Award applies to all employees who qualify and for those in the Local Government Pension Scheme, it is pensionable. The amount will be updated annually in line with the average pay increase for non-teaching employees.

## **Premium Payments**

In some circumstances voluntary overtime may be offered to staff to cover specific duties. In all cases, voluntary overtime must be agreed in advance of any work undertaken. In Aided and Foundation schools, the rate of pay for voluntary overtime will be time and a half for all hours worked in excess of 37 hours per week for grades 1 to 6. In Community and Controlled, the rate of pay for voluntary overtime will be time and half for all hours worked over 37 hours, for Grades 1 – 7.

Other premium payments will be in accordance with the provisions detailed on the eCWIP website. Details will be provided on request from the school office.

## Teaching Staff:

The Governing Body recognises and values the contribution made to the school by teaching staff. This group of staff includes all staff at the school that are subject to School Teachers Pay & Conditions, including unqualified teachers.

## Conditions of Service

Pay and conditions for teaching staff are negotiated nationally and the statutory requirements are set out in the School Teachers' Pay and Conditions Document (issued annually) and the Conditions of Service for School Teachers in England and Wales (known as the Burgundy Book).

## Pay Ranges

All teachers employed at the school are paid in accordance with the statutory provisions of the School Teachers' Pay and Conditions Document. A copy of the STPCD 2023 may be viewed in the school office or online [School teachers' pay and conditions - GOV.UK \(www.gov.uk\)](https://www.gov.uk/government/uploads/system/uploads/attachment_data/file/114211/school-teachers-pay-and-conditions-2023.pdf)

**Pay points within pay ranges used within this school are set out in the relevant paragraphs later in this policy.**

## Pay on appointment

The starting salary of a teacher on appointment to this school will be determined by the appointing panel, taking account of the skills and experience and previous salary of the teacher; details included in any advert and the provisions of the STPCD.

The school is committed to the principle of pay portability and will apply this principle in practice where appropriate when making all new appointments.

## Retirement Gifts

This scheme applies to a teacher who retires (i.e. is 60 plus years of age, is granted early release of pension [with or without redundancy] or Ill-Health retirement) having completed at least 20 years employment (the employment does not have to have been continuous) with the Borough Council, County Council or with an authority which merged to form the new County Council in 1974.

The employee may choose the gift within the following cost limits:

Minimum entitlement -	£110
Addition per complete year of employment beyond 20 -	£7
Maximum entitlement -	£184

A teacher cannot receive a cash award in lieu of a gift nor can cash be paid to make up the difference between the cost of the gift and the maximum entitlement. A teacher may add (within reason) to the entitlement if they prefer a gift of higher value than the entitlement allows. The choice of gift is subject to the approval of the Head teacher (or Governing Body, in the case of the retirement of the Head teacher). It should be a durable and tangible object and appropriate for the occasion.

## **Pay Reviews**

The governing body will ensure that every teacher's salary is reviewed with effect from 1st September each year and no later than 31 October (31st December for Head teachers).

Pay reviews will be in respect of incremental progression within pay ranges or to consider applications to the Upper Pay Range.

Any annual pay award applying to the national pay framework will also apply to locally adopted pay points and allowances.

A pay decision will be made annually for all teachers. Where a teacher will be absent because of maternity leave at the time of the appraisal review, the appraiser will conduct an appraisal review prior to maternity leave starting and this will be used as the basis for a pay recommendation. Where a teacher is absent for the whole of the appraisal period the appraiser will use appraisal information from the next most recent appraisal to inform pay recommendations.

Where a teacher is on long term sickness absence at the relevant time or has had a long term sickness absence during the relevant appraisal period consideration will be given to making reasonable adjustments in relation to the assessment of their performance against success criteria as appropriate on a case by case basis.

Within one month of the determination, the governing body will provide the teacher with an individual written statement setting out their salary and any allowances to which they are entitled and advising where a copy of the whole school pay policy (including the staffing structure) may be inspected.

Pay reviews for all teachers, including the Headteacher, will be based on performance as recorded through staff appraisal. Every appraisal report will contain a pay recommendation for eligible staff. Pay recommendations and decisions will be based on an overall assessment of the teacher's performance which will include the extent to which teachers have met their individual objectives, teacher standards and any other relevant standards.

All teaching pay ranges are not incremental scales and there is no automatic right to pay progression. Decisions regarding pay progression will be made annually with reference to the most recent appraisal report. Incremental progression for all teachers will be dependent on a successful appraisal and shall not exceed two spine points in the course of any school year.

It is expected that pay recommendations will be in line with professional dialogue during the course of the appraisal year and will not be a surprise to the appraisee. It will be possible for a "no pay progression" determination to be made without recourse to the capability procedure.

Final decisions about whether or not to accept a pay recommendation will be made by the Governing Body (or Head teachers' Pay Committee for the Head teacher), having regard to the appraisal report and taking into account advice from senior leaders (and external adviser in the case of the Head teacher).

Reviews may take place at other times of the year to reflect any changes in circumstances or job role that leads to a change in the basis for calculating an individual's pay. A written statement will be provided after any review and where applicable will give information about the basis on which it was made.

Where a pay determination leads or may lead to a period of salary safeguarding, the governing body will give the required notification as soon as possible and no later than one month after the date of the determination.

### **Teaching Staff Pay Appeals Procedure:**

A teacher may seek a review of any determination in relation to their pay or any other decision taken by the governing body (or committee or individual acting with delegated authority) that affects their pay.

Appeals may be made on the grounds that the person or committee by whom the decision was made has:

- a) incorrectly applied any statutory provision
- b) failed to have proper regard for statutory guidance
- c) failed to follow the school's own policies (appraisal or pay ) properly
- d) failed to take proper account of relevant evidence
- e) took account of irrelevant or inaccurate evidence
- f) was biased, and/or
- g) otherwise unlawfully discriminated against the individual concerned.

This list is not exhaustive.

The procedure for considering appeals is as follows:

#### *Informal stage*

As part of the Appraisal process, each teacher will be made aware of any pay recommendation to be reported to Governors.

Where a teacher is dissatisfied with a pay recommendation, they should (within five working days) request a meeting with their headteacher. The Head teacher will, within a further five working days, arrange a meeting (at which the appraiser should be present) to enable the teacher to present their case and any additional evidence they feel has not been taken into account.

This meeting should take place prior to the meeting of the Governors Pay Panel and the teacher will also be advised before that meeting whether the pay recommendation is to be changed.

Where the Head teacher is the appraiser, the teacher will have the right to submit written representations, which will be included in the paperwork submitted to the Governors Pay Panel.

Following the meeting of the Pay Panel teachers will receive written confirmation of their pay determination and the basis upon which the decision was made.

#### *Formal stages*

##### Stage 1- Pay Hearing

1. Where a teacher is dissatisfied with a pay decision, they should set down in writing their reasons in sufficient detail for a response to be prepared, and send it to the Chair of the Governors' Pay Panel, within ten working days of the notification of the pay decision.

2. The Chair of the Pay Panel will arrange a hearing within ten working days of receipt of the written appeal, at which they will consider the case and give the staff member an opportunity to make representations in person. Following the hearing the employee should be informed in writing of the decision and the right to appeal. The deadline for any appeal will be ten working days from receipt of written confirmation of the Stage 1 decision.

### Stage 2 – Appeal

3. Any pay appeal will be heard by a panel of three Governors who were not involved in the original determination normally within twenty working days of the receipt of the written notification of appeal. The member of staff will be given the opportunity to make representations in person. The decision of the appeal panel will be given in writing and where the appeal has been rejected this will include a note of the evidence considered and the reasons for the decision. The decision of the governors at this hearing will be final.

At all hearings under formal procedures the staff member is entitled to be accompanied by a trade union representative or work colleague. Where possible the trade union representative or work colleague will be consulted on the proposed date of a hearing. If a date is set at which the colleague or trade union representative is unable to attend, the teacher may suggest an alternative date and time provided it is reasonable and is not more than five working days after the original date.

## **Pay Range for Head teachers**

The Governing Body has a statutory duty to assign a school group size and a pay range for the head teacher. The governing body will calculate the Head teacher group size each September in accordance with the current STPCD. The governing body will assign or review a pay range when planning a new appointment, when the school group changes or where there is a change in the school's circumstances that leads to a significant change in the responsibilities of the post.

Further guidance is available in DfE Implementing Your School Approach To Pay [Implementing your school's approach to pay: October 2022 \(publishing.service.gov.uk\)](https://publishing.service.gov.uk/government/uploads/system/uploads/attachment_data/file/102422/Implementing_your_schools_approach_to_pay_October_2022.pdf)

The governing body will ensure that the process of determining the remuneration of the head teacher is fair and transparent. There will be a proper record made of the reasoning behind the determination of the pay range and the ratification of decisions made in this respect.

The Head teacher pay range for the academic year – 2023-2024 is

**L12-L18                    £61,882-£71,729**

A successful appraisal and the circumstances in which the governing body will consider awarding a pay point are

- where their appraisal outcome confirms the Head teacher has met or has made satisfactory progress with their individual objectives;
- is meeting or working towards appropriate elements of the Head teacher Standards of Excellence;
- pupil progress is improving;
- there has been positive impact on wider outcomes for pupils;



- improvements can be evidenced in specific elements of practice such as behaviour management or lesson planning and evidence exists of the positive impact of the Head teacher's leadership on the effectiveness of teachers or other staff.

The circumstances in which the governing body will consider awarding two points in one year are

- where their appraisal outcome confirms the Head teacher has made a specific exceptional contribution to school life which exceeded their individual objectives and has had a demonstrable impact on pupil progress outcomes;
- this may be evidenced by the quality of teaching and learning across the school.

School Teachers' Pay and Conditions allow the Governing Body to consider discretionary payments in addition to the head teacher's point on the pay range. These payments should not exceed 25% of the amount which corresponds to their pay point. Further guidance is available in Implementing Your School Approach to Pay and from Schools HR Consultancy.

## Pay Ranges For Other Classroom Teachers

### Pay on appointment

The starting salary of a teacher on appointment to this school will be determined by the appointing panel taking account of the skills and experience and previous salary of the teacher; details included in any advert and the provisions of the STPCD.

The school is committed to the principle of pay portability and will apply this principle in practice where appropriate when making all new appointments.

### Main Pay Range

Qualified teachers who are not entitled to be paid on any other pay range will be paid in accordance with the school's main pay range. These are based on the advisory pay points detailed in STPCD

Scale Point	Value
1	£30,000
2	£31,737
3	£33,814
4	£36,051
5	£38,330
6	£41,333

A successful appraisal and the circumstances in which the governing body will consider awarding one pay point are

- where their appraisal outcome confirms the teacher has met or has made satisfactory progress with their objectives; is meeting the Teacher standards and the majority of teaching is assessed as at least good. For teachers on the MPR who are also TLR holders, Governors will wish to ensure that the teacher's appraisal confirms that their performance related to the duties for which a TLR payment is made is good.

The circumstances in which the governing body will consider awarding two pay points are

- where their appraisal outcome confirms they have exceeded their objectives and are exceeding the relevant career stage standards and all teaching is assessed as outstanding.

Decisions on pay progression for newly qualified teachers subject to statutory induction arrangements will be taken by 31 October each year to take effect on 1 September that year and will be based on a recommendation from the headteacher which takes account of the teacher's assessment under the induction arrangements and against the Teachers' Standards.

## Upper Pay Range

Qualified teachers who have been assessed by this school as meeting the standards for payment on the Upper Pay Range will be paid in accordance with the school's upper pay range. These are based on the advisory pay points detailed in STPCD.

Scale Point	Value
Minimum	£43,266
U2	£44,870
Maximum	£46,525

Decisions regarding pay progression will be made with reference to the most recent appraisal report. Incremental progression for all teachers will be dependant on a successful appraisal.

Successful appraisals and the circumstances in which the governing body will consider awarding pay progression are: -

- where their appraisal outcome confirms that the teacher has met or made satisfactory progress with their individual objectives;
- their performance over at least two academic years in this school has been highly competent in all elements of the teachers' standards;
- the majority of their teaching is assessed as good with outstanding features; and that their achievements and contribution to the school are substantial and sustained.
- For teachers on the UPR who are also TLR holders, Governors will wish to ensure that the teacher's appraisal confirms that their performance related to the duties for which a TLR payment is made is good.

Only in the exceptional circumstances will an upper pay range teacher may progress on the range more frequently than at two yearly intervals.

## Progression to the Upper Pay Range

It is the responsibility of teachers to decide whether they wish to apply to be paid on the Upper Pay Range. Determinations as to whether a teacher progresses to the upper pay range will be made in accordance with the STPCD and the process set out in this pay policy.

In this school, teachers will be eligible to apply for progression where

- the teacher has progressed to the top of the school's main pay range; has been at the top of the Main Pay Range for at least a year in this school;
- has experience of working across two or more year groups and is demonstrably working to the Teacher Standards.

An application from a qualified teacher will be successful where the Governing Body is satisfied that:

- the teacher has evidence of high performance in this school in the previous two years which shows that the teacher is highly competent in all elements of the teacher's standards and that their achievements and contribution to the school are substantial and sustained and they are able to demonstrate that they have developed professionally in their teaching expertise.

Teachers may apply to be considered for progression to the upper pay range once per year. Where a teacher is intending to apply to progress to the UPR, they should notify their appraiser at the start of the appraisal year.

Applications should be submitted to the headteacher, using the attached form in Appendix C, in advance of their annual appraisal review and a recommendation will be made by 31 October for consideration by the Governing Body Pay Panel and if successful, pay awards will take effect from 1 September in the year of application.

Where a teacher has been assessed as meeting the standards, they will be appointed to

Progression to the upper pay range is permanent, while the teacher remains employed in this school.

## Unqualified Teacher Pay Range

The school's pay range for an unqualified teacher is:

Scale Point	Value
1	£20,598
2	£22,961
3	£25,323
4	£27,406
5	£29,772
6	£32,134

A successful appraisal and the circumstances in which the governing body will consider awarding one pay point are

- where their appraisal outcome confirms the teacher has met or has made satisfactory progress with their objectives;
- the majority of teaching is assessed as at least good and they take advantage of opportunities for professional development and use the outcomes effectively to improve pupils' learning.

Any pay points awarded to unqualified teachers are permanent, while the teacher remains employed at this school.

Unqualified teachers are not eligible for teaching and learning responsibility or special educational needs allowances. The governing body will not under any circumstances determine a salary for an unqualified teacher outside of the unqualified teacher pay spine.

## Allowances For Classroom Teachers

### Teaching and Learning Responsibility Payments

TLRs are awarded at the discretion of the governing body. TLR payments [1 or 2] will be awarded to the holders of the posts indicated in the attached staffing structure. A TLR 1 or 2

payment when assigned will last for the duration of the post and changes to the staff structure will be subject to consultation. Teachers will not be expected to undertake relevant permanent additional responsibilities without award of a TLR payment.

The governing body will award Fixed Term Teaching and Learning Responsibility payments (TLR 3) to a classroom teacher who is required to undertake a clearly defined and time-limited school improvement project or one-off externally driven responsibility. The duration of the fixed term will be established at the outset and payment will be made on a monthly basis for the duration of the fixed term.

The values of TLRs to be awarded are set out below:

TLR2a **£3216-£7847** per annum to the holder

TLR2b **£3216-£7847** per annum to the holder

TLR1a **£9272-£15,690** per annum to the holder (none at present)

TLR1b **£9272-£15,690** per annum to the holder (none at present)

TLR3 payments will be determined on a case by case basis taking account of the additional responsibilities required of the teacher. The range for TLR3s (**£639-£3169**) refers to the annual value of such an award. Where a TLR3 is awarded with a fixed-term of less than one year then the total value should be determined proportionately to the annual value.

TLR1 and 2 will only be awarded if the governing body is satisfied that the duties of the post include a significant responsibility that is not required of all classroom teachers and that:

- a) is focused on teaching and learning,
- b) requires the exercise of a teacher's professional skills and judgement,
- c) requires the teacher to lead, manage and develop a subject or curriculum area; or to lead and manage pupil development across the curriculum,
- d) has an impact on the educational progress of pupils other than the teacher's assigned classes or groups of pupils, and
- e) involves leading developing and enhancing the teaching practice of other staff.

In addition, before awarding a TLR1, the governing body must be satisfied that the significant responsibility referred to above includes line management responsibility for a significant number of people.

A teacher may not hold more than one TLR 1 or 2 of any value concurrently. A TLR is a payment integral to a post in the school's staffing structure and may therefore only be held by two or more people when job-sharing that post. Holders of a TLR1 or 2 will also be eligible to receive a TLR3.

TLRs are paid pro rata.

### **Special Educational Needs Allowance**

The governing body will award an SEN Allowance to a classroom teacher in accordance with Schools Teachers' Pay and Conditions.

The SEN allowance is determined as a spot value, taking into account the structure of the school's SEN provision and:

- a) whether any mandatory qualifications are required,
- b) the qualifications and expertise of the teacher relevant to the post, and
- c) the relative demands of the post.

SEN allowances will be paid to the holders of the posts indicated in the attached staffing structure (Appendix 2). The values of the SEN allowances to be awarded are set out below: SEN1 **£2539** to the holder of SENDCO.

## **Additional Allowances**

### **Acting allowance**

Where a teacher is assigned and carries out duties of a head teacher, deputy head teacher, or assistant head teacher, but has not been appointed as an acting head teacher, deputy head teacher or assistant head teacher, the governing body will, within the period of four weeks beginning on the day on which such duties are first assigned and carried out, determine whether or not an 'acting allowance' must be paid in accordance with the following provisions.

Where the governing body determines that an acting allowance will not be paid but the relevant duties continue, then the governing body may review this decision and make a further determination at a future date as to whether or not an acting allowance may be paid.

If paid, the acting allowance will be of such value as to ensure that the teacher receives remuneration of equivalent value to such point on the leadership pay spine as the governing body has determined applies to the head teacher, deputy head teacher or assistant head teacher (as set out in this policy).

For as long as an acting allowance is being paid, the teacher will be expected to undertake the professional responsibilities applicable to a head teacher, deputy head teacher or assistant head teacher and work to the relevant teachers' standards.

### **Salary Sacrifice**

The governing body supports salary sacrifice arrangements in respect of Childcare vouchers; Bicycles and Mobile Phones. Arrangements will be made to enable staff to participate in these schemes should they wish to do so.

### **Bonuses/Honoraria**

**There is no provision within the STPCD 2023 for the payment of bonuses or honoraria in any circumstances and that any such awards made to a teacher for their teaching work would be unlawful. The governing body will not therefore pay any bonus or honorarium to any member of the teaching staff for carrying out their professional duties as a teacher.**

### **Part-time Teachers**

Teachers employed on an ongoing basis at the school who work less than a full working week are deemed to be part time. The governing body will ensure that part time teachers are given a written statement detailing their working time obligations (within and beyond the school day) and the standard mechanism used to determine their pay, subject to the provisions of the statutory pay arrangements and by comparison to the school's timetabled teaching week for a full time teacher in an equivalent post.

Part time teachers will be paid a pro-rata percentage of the appropriate full time equivalent salary and the same percentages will be applied to any allowances (except TLR3) awarded to a part time teacher as set out in the STPCD.

### **Short Notice/Supply Teachers**

Teachers employed on a day to day or other short notice basis will be paid on the Main or Upper Pay Ranges as agreed with the candidate on appointment.

Teachers employed on a day to day or other short notice basis must be paid in accordance with the STPCD 2023.

Teachers who work less than a full day will be hourly paid and will have their salary calculated by dividing the annual amount by 1,265 to give an hourly rate.

A short notice teacher who is employed by the school or another school in the authority throughout a period of 12 months (beginning August or September) will not be paid more in respect of that period that they would have if they had been in regular employment throughout the period.

Date of review: 26<sup>th</sup> *September 2023*

Date of review: *September 2024*

## Pay Committee Terms of Reference

### MEMBERSHIP:

Must not be less than three governors. It may have associated governors as members and also additional people can attend meetings at the request of the Committee.

Members	Paul Hudson Katie Pierce Adam Friend Liz Smith
Date	26 <sup>th</sup> September 2023
Next Review Date	September 2024

### CONSTITUTION:

The Membership of the Committee will be as per the agreed membership grid. (Suggested membership to include Chairperson of Finance Committee.)

**A person paid to work at the school, other than the Head teacher, must withdraw and not vote on pay or performance appraisal of any staff.**

**The Head teacher must withdraw and not vote on their own pay or performance appraisal.**

A quorum will be at least three governors.

The Chairman of the Committee will be elected by the whole Governing Body.

A member of staff should not chair this committee.

### TERMS OF REFERENCE:

- 1 To prepare/oversee a Whole School Pay Policy for approval by the whole Governing Body
- 2 To ensure the Appraisal Policy is in place and reviewed as appropriate with any changes agreed by the whole Governing Body
- 3 The Head teacher will carry out an annual review of the salaries for all staff. This will be completed in the Autumn Term, ensuring that a copy of the salary statement is given to every teacher.
- 4 After taking advice from the Head teacher, to make decisions relating to pay concerning post-threshold teachers (suggested in the Autumn Term)
- 5 To make decisions concerning pay in relation to the Head teacher  
(Copies of review statements can be made available for the duration of the meeting)

- 6 To ensure the appropriate notification of decisions is sent to the Teachers Pay and Pensions Team, Local Authority, using the appropriate salary notification form.
- 7 To ensure minutes *(with decisions and action points)* are taken at each meeting and circulated promptly to all members of the Committee and the Clerk to Governors, and brief notes are circulated to all members of the Governing Body, omitting detailed reference to the review statement and individuals' performance

**The composition and terms of reference of this committee will be reviewed annually in the Autumn Term.**

### **Conduct of Pay Hearings**

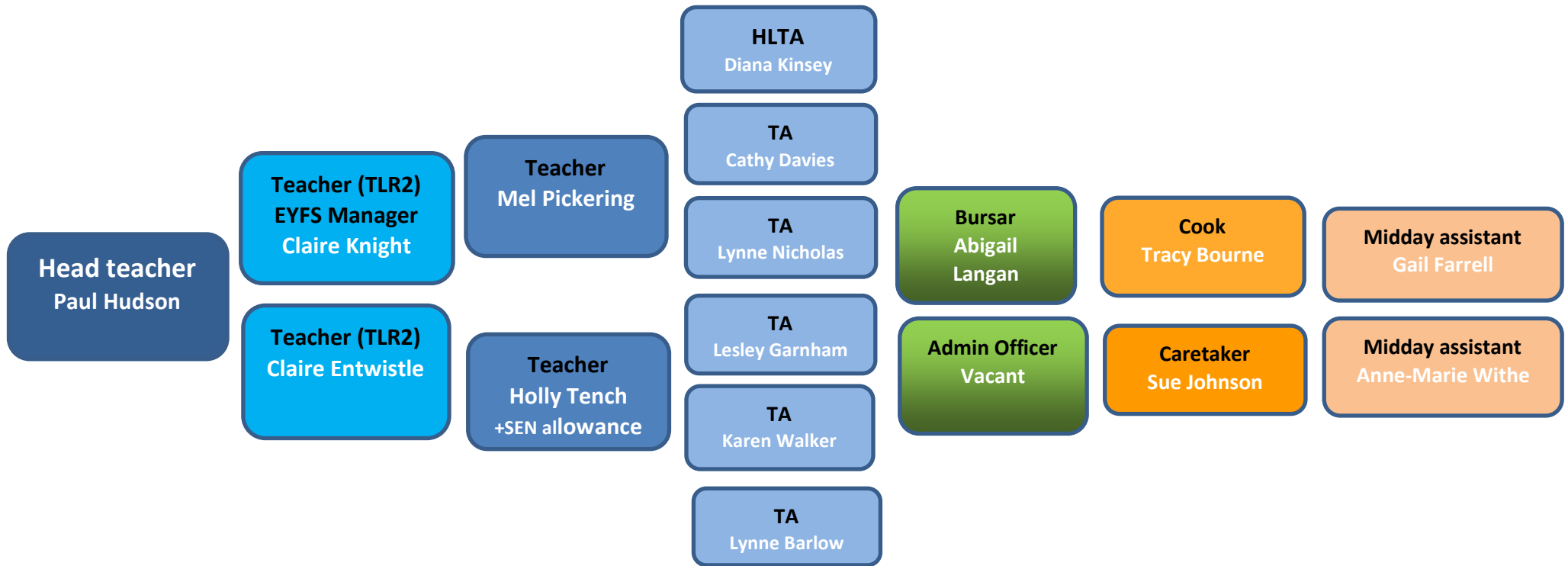
The procedure at the hearing will normally be as follows:

1. The hearing will be conducted by either the Pay Panel or Pay Appeal Panel of the Governing Body as appropriate.
2. The Panel be advised/supported by an HR Adviser.
3. The Chair of the Panel will satisfy himself/herself that the all those present understand the purpose of the hearing.
4. The employee or his/her representative will be invited to present their case.
5. The management representative will be given the opportunity to question the employee or his/her representative.
6. The management representative will be invited to respond to the employee's case.
7. The employee and/or representative will be given the opportunity to question the management representative.
8. At any stage during the hearing any member of the Panel and any adviser(s) may ask questions of the employee, their representative or the management representative, as they may consider appropriate in order to ascertain the facts and arguments.
9. The employee or their representative will then be invited to make a closing statement not introducing any new material.
10. The management representative will be given the opportunity to make a closing statement also without introducing any new material.
12. Both parties will withdraw to allow the Panel to review and consider the evidence and arguments in conjunction with any advisers.
13. The Panel will then recall both parties to inform them of their decision. The decision will normally be announced personally to the parties as soon as it is possible on the day of the hearing. If it is not possible to make a decision immediately the parties will be informed of this. The decision will be confirmed in writing and delivered to the employee either by hand or electronically with a copy to the trade union



representative (sent electronically) or work colleague and the management representative.

# Staffing structure 2023— 24



## **Appendix C**

### **UPPER PAY RANGE MODEL APPLICATION FORM**

*This form should be used by teachers who wish to apply to progress from the Main Pay Range to the Upper Pay Range.*

#### **ELIGIBILITY CRITERIA**

To be eligible to apply for the UPR, a teacher must have progressed to the top of the school's main pay range; have been at the top of the Main Pay Range for at least two years in this school; and be demonstrably working to the UPR standards.

#### **APPLICATION PROCESS**

- Teachers may apply to be considered for progression to the upper pay range once per year.
- Applications should be submitted to the headteacher using this form in advance of their annual appraisal review and a recommendation will be made by 31 October for consideration by the Governing Body Pay Panel
- Applications will be considered by the Governing Body Pay Panel who will also be provided with a copy of the teacher's Appraisal Review Statement which will include the Appraiser's recommendation on progression.
- Where a teacher has been assessed as meeting the standards, they will be appointed to the first point on the Upper Pay Range.
- If successful, pay awards will take effect from 1 September in the year of application.

#### **APPLICATION GUIDANCE FOR PROGRESSION TO OR WITHIN THE UPR**

##### **1. HIGHLY COMPETENT IN ALL ELEMENTS OF THE TEACHERS' STANDARDS.**

The Pay Panel will consider your assessment against the teachers' standards relevant to your career stage as contained in your Appraisal Review Statement. In this school, "highly competent" means performance which is not only good but also good enough to provide coaching and mentoring to other teachers, give advice to them to demonstrate to them effective teaching practice and how to make a wider contribution to the work of the school, in order to help them meet the relevant standards and develop their teaching practice.

##### **2. ACHIEVEMENTS AND CONTRIBUTION**

Please attach a supporting statement of no more than two sides of A4 describing in your own words and giving examples and supporting evidence of

- your achievements over the last two years
- how you have developed professionally, and
- your substantial and sustained contribution to school life

In this school, "substantial" means of real importance, validity or value to the school; play a critical role in the life of the school; provide a role model for teaching and learning; make a distinctive contribution to the raising of pupil standards; take advantage of appropriate opportunities for professional development and use the outcomes effectively to improve pupils' learning. In this school, "sustained" means maintained continuously over a long period e.g. 2 years. Applicants are also advised to consider and reflect on the Teachers' Standards.